

TREE DAY!

COOL ACTIVITIES BOOK

SCHOOLS' TREE DAY

Friday 29 July 2011

NATIONAL TREE DAY

Sunday 31 July 2011

national
tree day

PLANETARK TOYOTA

For more information
visit these websites:

toyota.com.au/treeday
treeday.planetark.org

PLANETARK



The world is a wonderful place
to live and we must all help to
protect our environment.

A really good way to clean the air is to plant trees. Trees absorb carbon dioxide and give birds and animals shelter and food.

So that everyone can join together to plant more native trees, environment group Planet Ark set up National Tree Day and asked Toyota to help them organise it around Australia.

Toyota is a world-wide car making company and they work hard to design and build cars that have less impact on our environment. You may have heard about the Toyota Prius and Hybrid Camry cars which use both an electric motor and a petrol engine to help reduce nasty emissions.

So you can understand more about how planting trees helps our environment, Toyota would like you to enjoy the puzzles and games in this book.

National Tree Day this year is on Sunday 31 July.

**Your school can join in with
Schools' Tree Day on Friday 29 July.**

*Please join us and many thousands of Australians
on National Tree Day to make our world a better place.*

 **TOYOTA****PLANET ARK**

Help the Prius find his way through the forest of Australian native trees. Watch out for creepy crawlies!

Over here Prius!



Start

Finish



Are you ready for NATIONAL TREE DAY?

Did you know the Toyota Prius Hybrid uses petrol and electricity in synergy to power the car. This makes the Prius an extremely fuel efficient and environmentally friendly car.

- Seedlings ✓
- Native species
- Water
- Bucket
- Watering can
- Mulch
- Gloves
- Sun block
- Sun hat
- Spade
- Tree guard
- Volunteers
- Hybrid
- Prius
- Environment
- Plant
- Dirt
- Growth
- Tree day

E	N	V	I	R	O	N	M	E	N	T	T	N	B
C	G	R	O	W	T	H	S	F	U	S	S	A	Y
A	N	Z	T	B	U	C	K	E	T	U	U	T	Q
T	R	E	E	G	U	A	R	D	R	N	N	I	A
F	H	Y	B	R	I	D	J	K	E	H	B	V	I
E	S	M	U	L	C	H	Q	D	E	A	L	E	L
T	P	A	T	V	C	I	C	Y	D	T	O	S	H
W	A	T	E	R	I	N	G	C	A	N	C	P	O
V	D	Y	U	V	G	N	F	O	Y	T	K	E	H
D	E	V	G	L	O	V	E	S	A	B	V	C	P
Q	I	V	O	L	U	N	T	E	E	R	S	I	O
K	P	R	I	U	S	P	L	A	N	T	D	E	R
V	B	C	T	B	W	A	T	E	R	W	B	S	H
V	S	E	E	D	L	I	N	G	S	V	I	Y	N



Create a Prius of your own



1. Cut out your hybrid car



2. Fold along the dotted lines

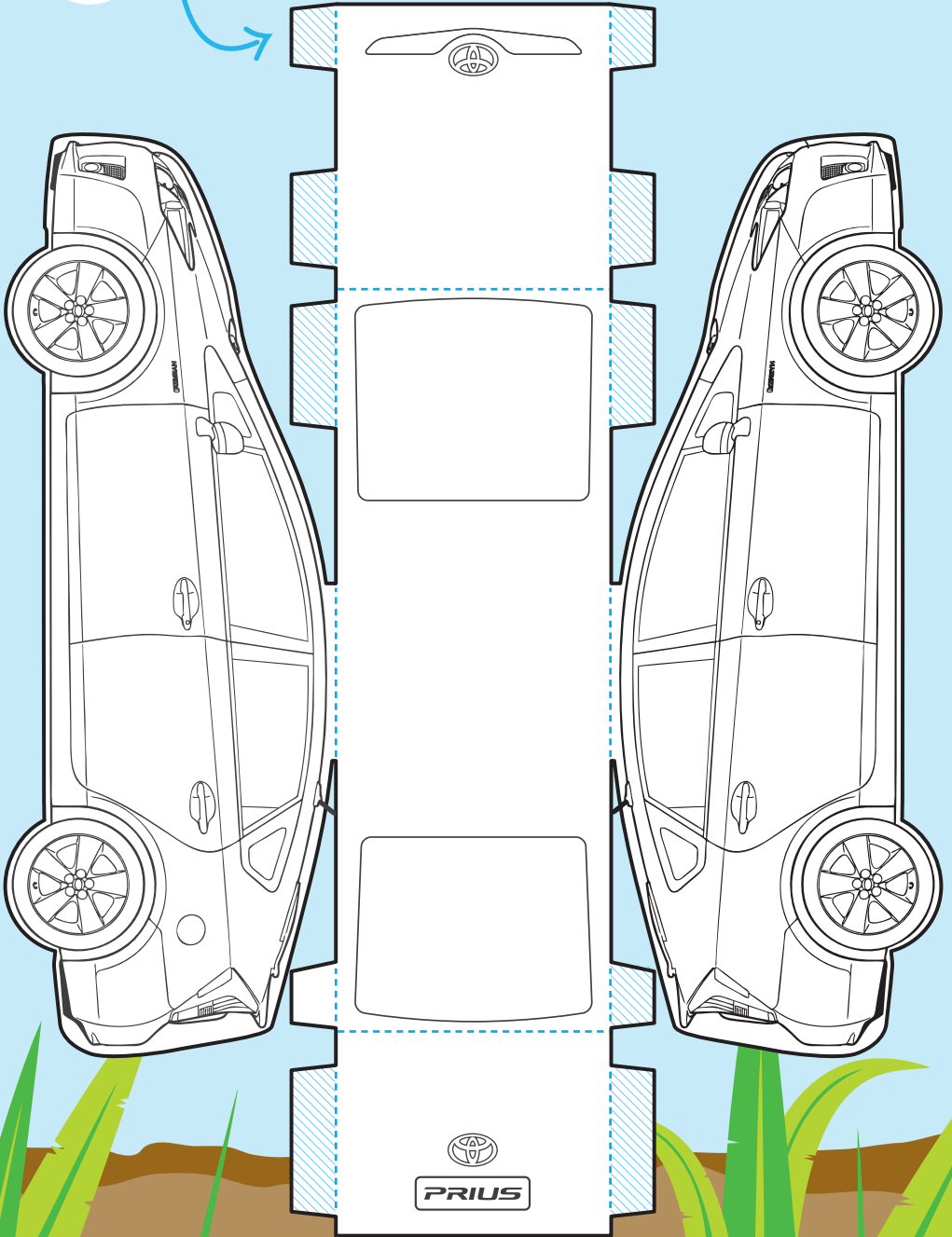


3. Customise your car



4. Glue or tape the tabs to form your car

5. For extra copies of this page go to toyota.com.au/treeday



TREE TRIVIA

Did you know...

Car owners can plant native trees to counter the greenhouse emissions of their vehicle travel. 17 native trees over their lifetime (around 30 years) can offset the carbon emissions produced by an average year of car use.

Trees are the largest of all living things - some species can grow 100 metres tall and weigh 600 tonnes.

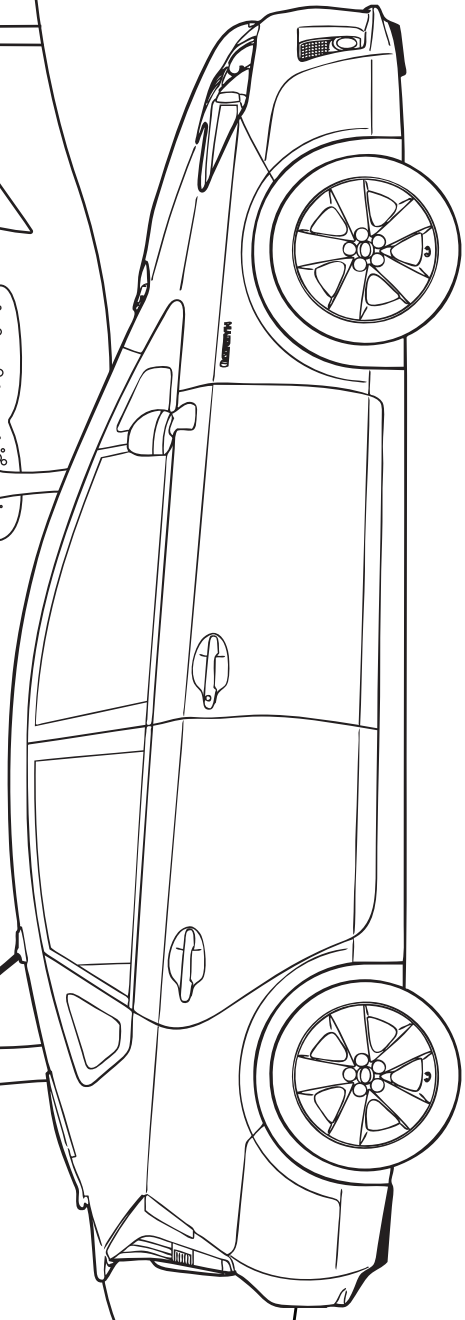
Trees first appeared on Earth long before the dinosaurs did - about 400 million years ago!

Eucalyptus trees are Australia's most common tree species and can grow up to 50 metres. Eucalyptus trees can be used for paper, insect repellents, chest rubs and cough drops.

Trees improve water quality by acting as a filter to unwanted nutrients and pesticides.

Many trees can outlive humans, and some can live more than 1000 years. Australia's oldest tree is the King Billy Pine, found in Tasmania and estimated to be over 1200 years old!

COLOUR ME IN!



PLANETARK

 **TOYOTA**

 HYBRID SYNERGY DRIVE

 national tree day

CARBON FOOTPRINT

tips to reduce your

Planting trees is just one way you can help reduce the level of greenhouse gases in the atmosphere. Here are some other things you can do...

Turn your TV and computer off at the wall rather than use power by leaving it on standby.

Switch off the lights in your classroom when you leave for recess and lunchtime. Why not make some Switch Off stickers to put on all the switches around the school?



SWITCH OFF!



If you drive to school find out who lives in your area so you can carpool. The 3 people who live closest to me are:

1. _____
2. _____
3. _____

If it's not too far ride a bike or walk.

Most importantly, remember to share your knowledge with others so they too can help care for our environment.

 **TOYOTA**

PLANET ARK